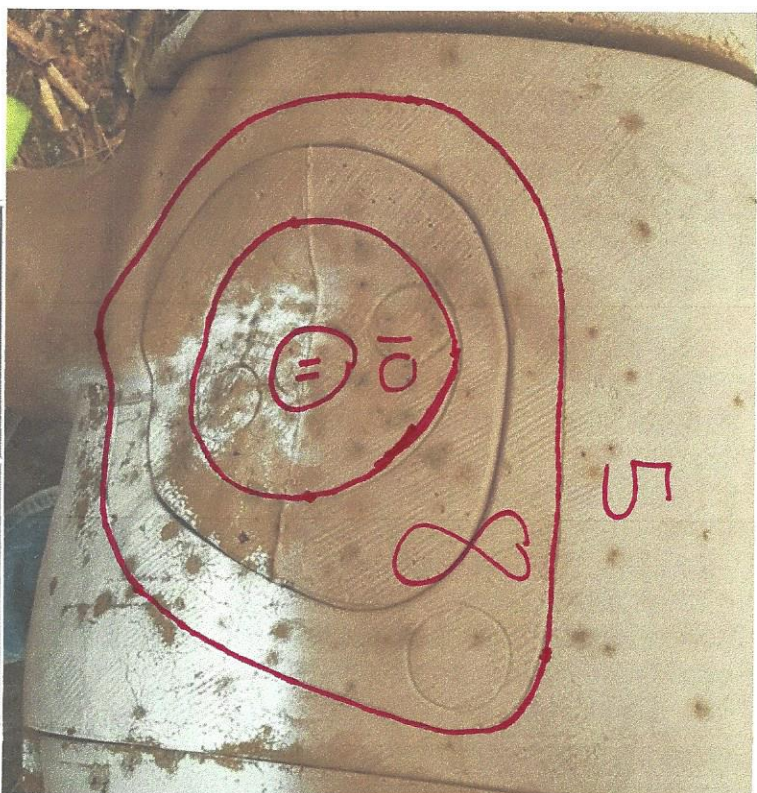


How to score a 3D Archery Target



In the photograph the center ring is 11 points.

The next circle is 10 points.

The next ring is JUST the insert.

The big ring is the 8 point ring.

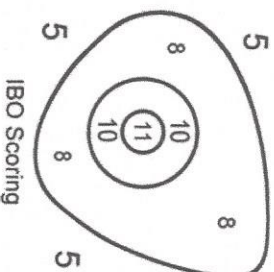
NOTE: This picture is an example of the 3D targets you may see at the State Match.

3D

If the arrow shaft touches a line, it will score the next highest score.

Arrow must hit "hair". If arrow hits horn, hoof, rock, or dirt mound it scores zero.

If a target has a 12 or 14 ring, these will not be used for scoring.



IBO Scoring