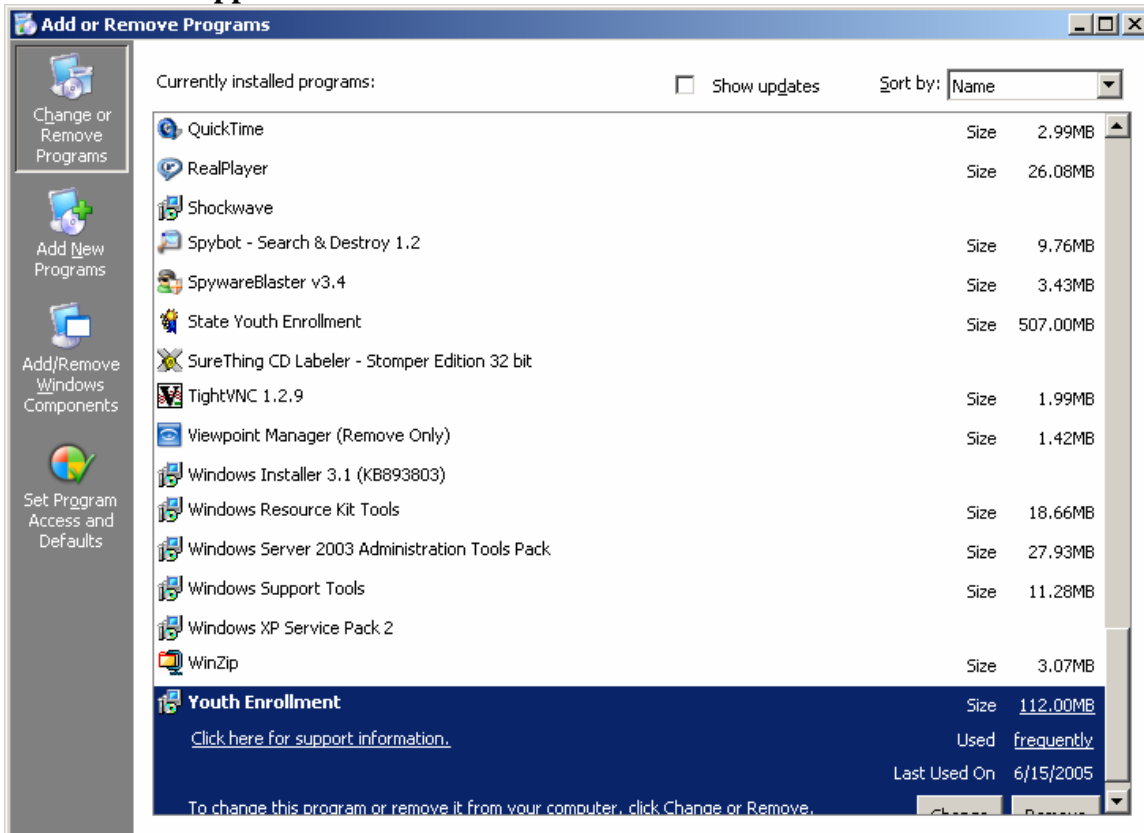


6/17/05 With the major upgrade install from v2.4 to version 2.50.0512, MarTech automatically:

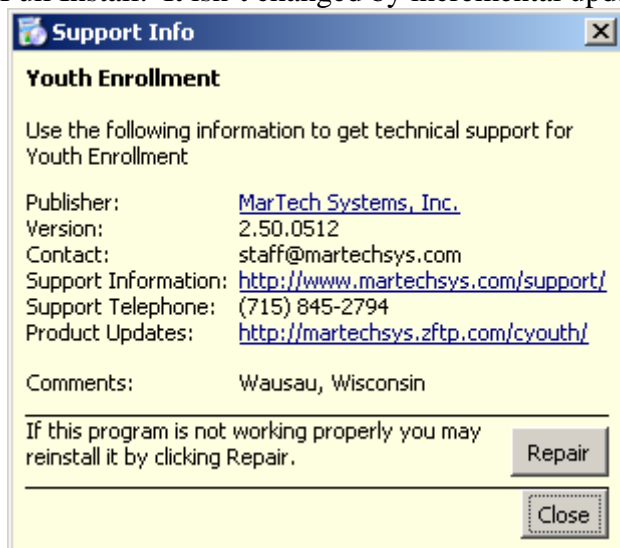
- a) creates a backup of the Data folder before installing v 2.5
- b) deletes old versions = Why you click NO 3x (checks for 7 different ones and removes them, if found)
- c) added a Support Information link with major version number ending in mmdd
- d) Help|About now lists key program files in a drop-down with their “last-modified” date. When incremental updates are released, they will notify you of a file that changed and the new date to verify.

New way to tell what version of Youth Enrollment you have installed:

Start|Control Panel|Add or Remove Programs, slide to bottom to see **WinYouth**, then click on **Support Information link**.



Version ends with mmdd month and day of the MarTech CD–released major version Vx.xx.mmdd Upgrade or Full Install. It isn’t changed by incremental updates.

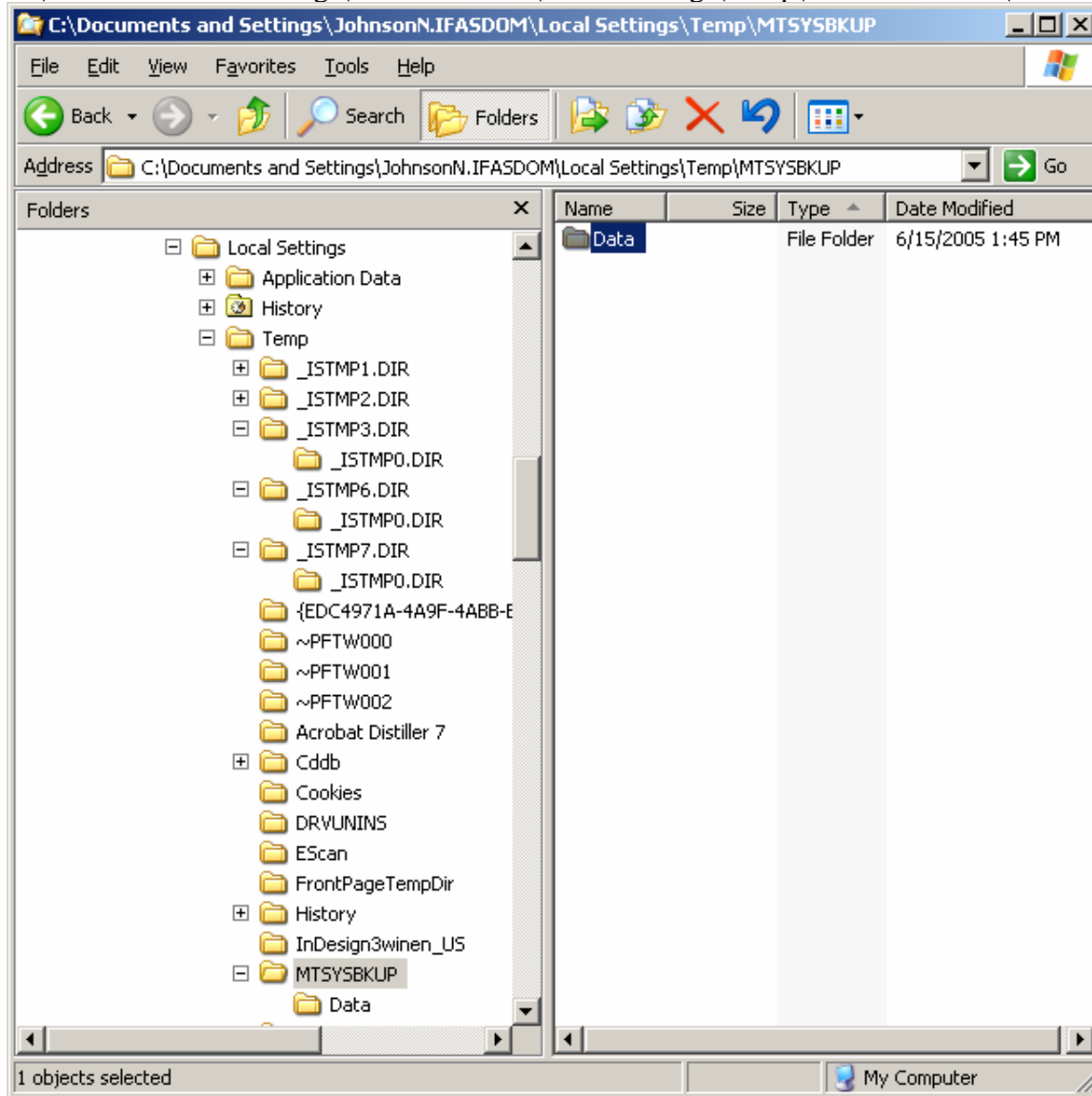


Help|About compare dates for file(s) listed in the incremental update website information to verify update installed correctly.

New Martech automatic backup of the Data folder before a major version upgrade, based on alias in BDE Admin.

C:\Documents and Settings\All Users\Local Settings\Temp\MTSYSBKUP\Data

C:\Documents and Settings\“installer user”\Local Settings\Temp\MTSYSBKUP\Data



Permissions

- 1) If Data is on the local hard drive, each User needs Administrative Access, Full Control, to WinYouth and all sub-folders as well as Borland Shared on local drive.
- 2) If Data is on a peer-to-peer network, each User needs Administrative Access, Full Control, to WinYouth and all sub-folders as well as Borland Shared on the source drive.
- 3) If Data is on the network server, all users also need Administrative Access, Full Control, to the folder one level above the data folders (S:\4HBR\) and all its sub-folders (S:\4HBR\Data, S:\4HBR\LOCKS...).

Start|Program Files|WinYouth|MarTech LOCKS Tool- run for C and network drive
Check all .naf., .lck, and .net, then delete files found. Useful if program won't open.