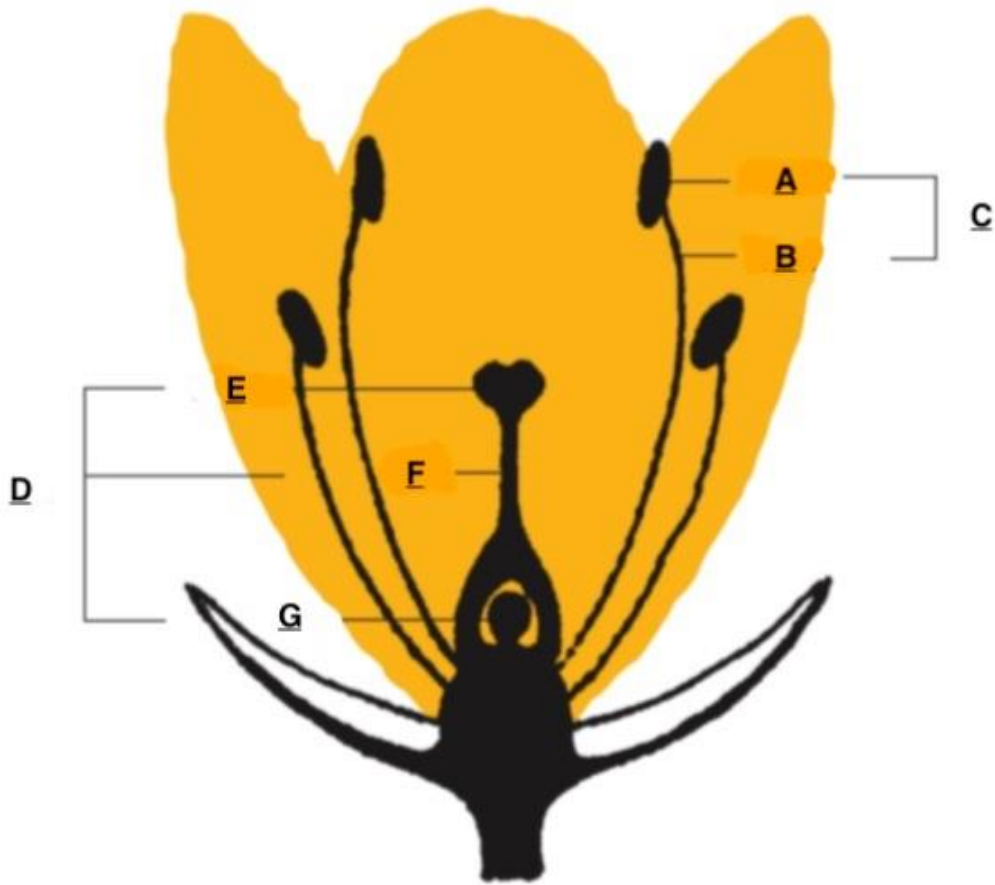


Pollinator Questions



Identify the following by letter:

1) ANTHOR _____

2) FILAMENT _____

3) STIGMA _____

4) STYLE _____

5) STAMEN _____

6) OVARY _____

7) PISTIL _____

- 8) Which of the following are invertebrate pollinators?
- a) birds and bats
 - b) lemurs, possums, arboreal rodents, gecko lizards
 - c) bees, butterflies, wasps, flies and beetles
 - d) all of the above
- 9) Which of the following is a way plants can be pollinated?
- a) wind
 - b) splashing rain drops
 - c) animals
 - d) all of the above
- 10) A plant secretes this to attract pollinators.
- a) seeds
 - b) nectar
 - c) pollinarium
 - d) stalks
- 11) How do pollinators like birds and bats carry pollen?
- a) on their feet
 - b) in their mouths
 - c) on their feathers or hair
 - d) these animals are not pollinators
- 12) What do bees and butterflies have to carry pollen?
- a) hairs
 - b) long proboscis
 - c) sticky pads on their abdomen
 - d) bristles on their legs, heads and other body parts
- 13) Butterflies use this to gather nectar?
- a) proboscis
 - b) wings
 - c) long feathered antenna
 - d) none of the above, butterflies are not pollinators
- 14) How do plants attract pollinators?
- a) petals with lines to guide the pollinator
 - b) aroma to attract pollinators
 - c) colors since many pollinators are sensitive to UV light
 - d) all of the above
- 15) Pollinators pollinate what fraction of staple crop plants worldwide?
- a) $\frac{3}{4}$
 - b) $\frac{1}{2}$
 - c) $\frac{1}{4}$
 - d) $\frac{4}{5}$

- 16) Which of the following are the result of pollination.
- a) ketchup, mustard, relish
 - b) tomatoes, cucumbers, onions
 - c) leafy greens, beets and peas
 - d) vanilla, cocoa, strawberries
- 17) Which is not a correct step in pollination?
- a) Pollinator is attracted to flower
 - b) pollinator eats food source while gathering pollen on its body
 - c) pollinator flies through the air and shakes off pollen that falls and pollinates a plant
 - d) pollinator lands on another plant and pollen falls off and pollinates a plant
- 18) Why does the Rafflesia flower smell like rotten meat?
- a) to attract the beetle that pollinates it
 - b) to attract the fly that pollinates it
 - c) to avoid pollinators altogether since it pollinates through wind
 - d) to attract bats to assist with pollination
- 19) What do the following pollinators have in common: honeybees, ants, wasps, flies and beetles.
- a) they all have long proboscis for gathering nectar from long tubular flowers
 - b) they all have a short proboscis to gather pollen from smaller shorter flowers
 - c) they all are attracted to mainly red flowers due to UV reflection
 - d) they all have wings to stir pollen up into the air for wind pollination
- 20) What is a typical feature of red flowers:
- a) their nectar is rich in anti-oxidants which attract pollinators
 - b) their nectar is deep down inside requiring a long proboscis
 - c) their nectar is rich in proteins that provide instant energy
 - d) their nectar is rich in carbohydrates providing instant energy
- 21) Honeybees have a unique feature, what is it?
- a) they have baskets on their legs to carry pollen back to their home
 - b) they have sticky pads on their wings to carry pollen back to their homes
 - c) they have long proboscis to gather nectar deep in flowers.
 - d) all of the above are true about honeybees
- 22) The pollen-producing part of a flower is the:
- a) anther
 - b) filament
 - c) stamen
 - d) style
- 23) The combination of pollen and egg form a:

- a) nodule
- b) seed
- c) grain
- d) nectarphore

24) The purpose of the honeysuckle strong midsummer night aroma is:

- a) to attract the bees that pollinate it
- b) to attract the moth that pollinates it
- c) to attract the bat that pollinates it
- d) to attract the hummingbird that pollinates it

25) Insect pollinators see color differently than we do because:

- a) they are sensitive to low frequency color patterns
- b) they are sensitive to UV light
- c) they have eyes that only see in black and white
- d) none of the above

Juniors questions 1-15
Intermediates questions 1-20
Seniors questions 1-25

ANSWERS:

- 1) A
- 2) B
- 3) E
- 4) F
- 5) C
- 6) G
- 7) D
- 8) C
- 9) D
- 10) B
- 11) C
- 12) D
- 13) A
- 14) D
- 15) A
- 16) C
- 17) C
- 18) B
- 19) B
- 20) D
- 21) A
- 22) A
- 23) B
- 24) B
- 25) B